

SonoRad K40

Portable Color Doppler for
Precise diagnosis

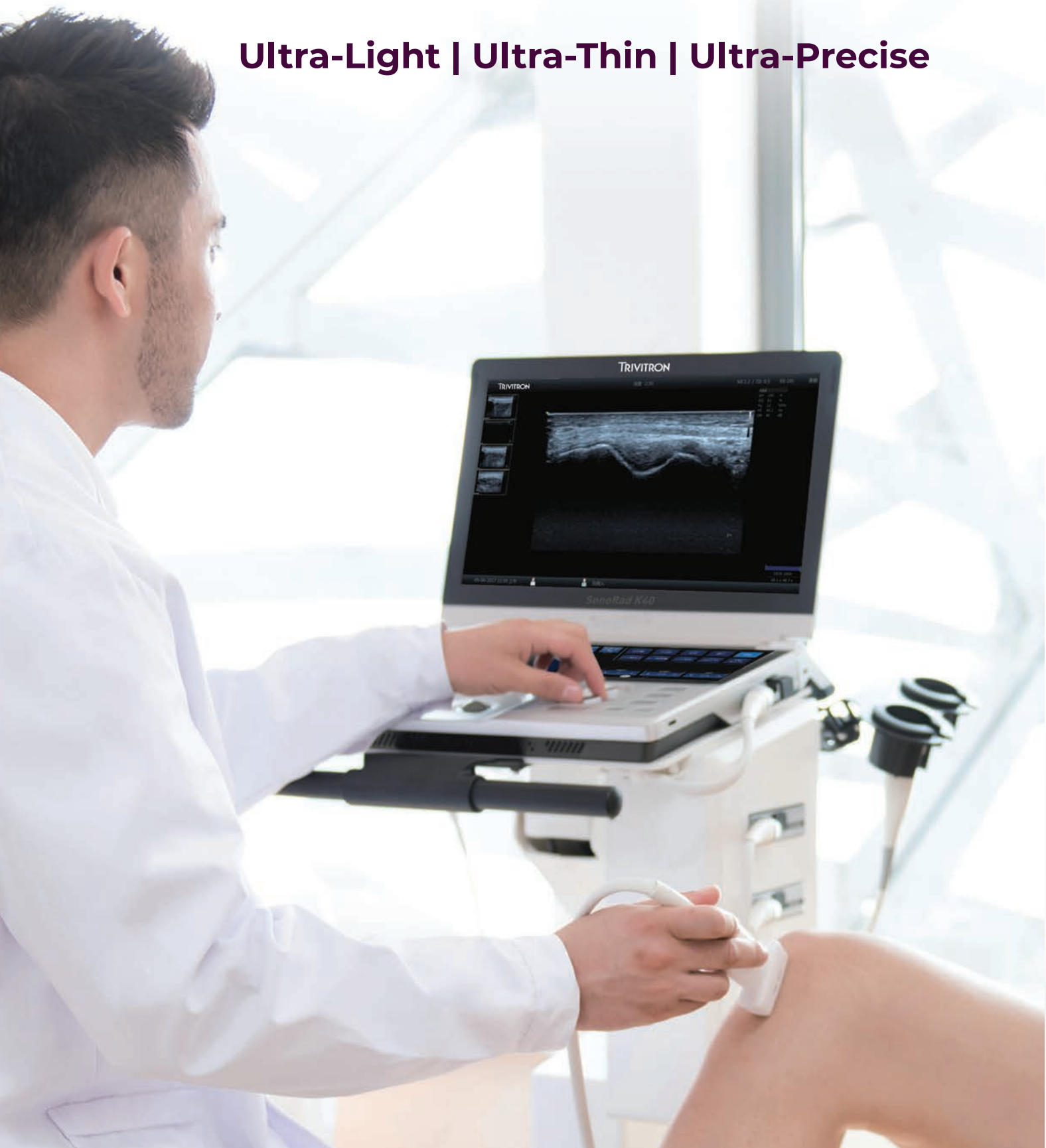


Introducing

SonoRad K40

SonoRad K40, the innovative portable color ultrasound system brings to you the advanced technology of our original RF ultrasonic metadata platform, a light, intelligent and powerful tool.

Ultra-Light | Ultra-Thin | Ultra-Precise



Excellent Image Quality

SonoRad K40 is powered by Advanced Images and precise measurements in a compact Ultra-Portable form.

- ▶ The unique RF platform provides advanced Image quality in resolution and contrast.
- ▶ Pure Wave Probe Technology improves the penetration and Color sensitivity.
- ▶ Perfect 3D/4D technology with STIC, Mcut and Auto NT fulfills all obstetric application.
- ▶ HQ 3D image: provides high definition 3D image quality.
- ▶ Smart-touch user interface fully utilizes touch panel possibility for easy operation such as rotation of 3D rendering image and comment.

Streamlined Workflow



The ultra-compact system can be carried around with ease or with a mobile cart which is equipped with multi-probe connection. A wide range of advanced connectivity options such as PACS, modality worklist (MWL), DICOM, WiFi, Bluetooth, VCloud help you streamline your workflow.

Intuitive Touch Panel Operation



Keyboard

- ▶ Highly sensitive 8 inch capacitive touch panel
- ▶ Intuitive, configurable and touch interactive operation interface
- ▶ Ergonomic hard keys for general ultrasound operations
- ▶ 6 TGC slides, functionality at any depth
- ▶ Backlight keys

Image display screen

- ▶ 15.6 inch high resolution IPS,LED technology, & pixel resolution display screen.
- ▶ Big angle tilting capability

Trolley

The trolley is an optional accessory for SonoRad K40. It is simplified with small footprint and excellent mobility.

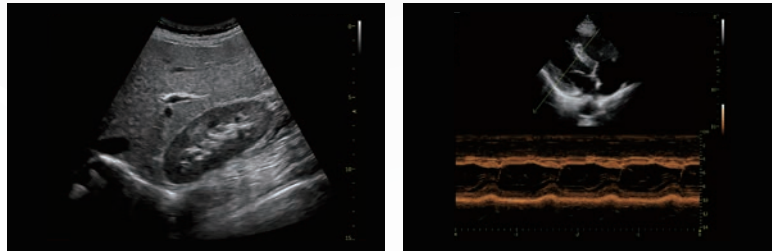
Cart Configuration

- ▶ Cart base
- ▶ 6 probe holders
- ▶ 1 pc of B/W graphic printer bracket
- ▶ Up/Down mechanism (manually)



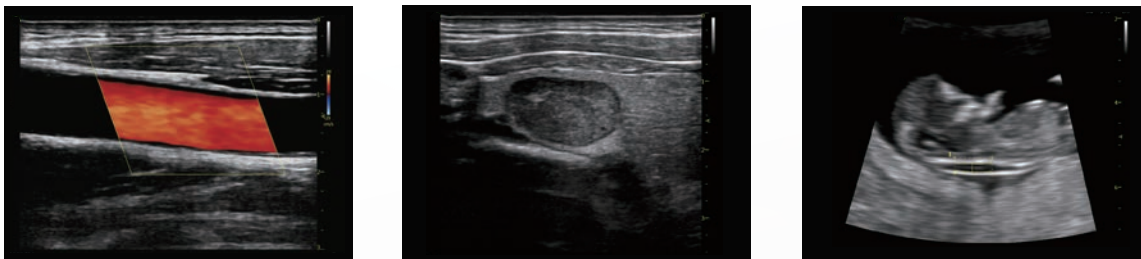
Emergency

SonoRad K40 is a versatile, ultra-portable imaging system that delivers fast, accurate results at patient's bedside irrespective of the patient location



General Imaging

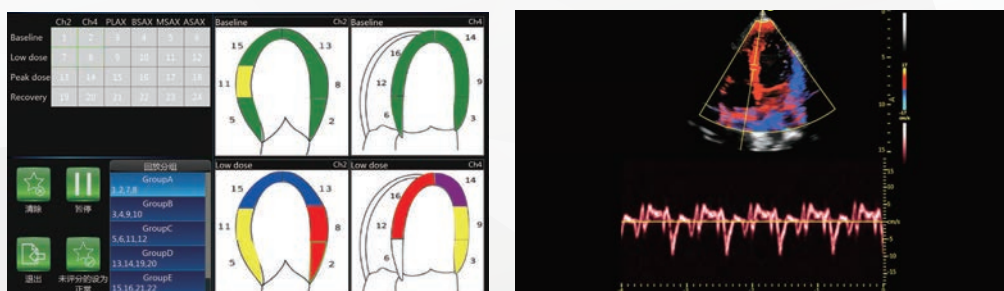
- ▶ General abdominal
- ▶ OB/GYN
- ▶ Small parts
- ▶ Vascular



Cardiology

Wide range of Cardio-vascular applications for increased diagnostic confidence.

- ▶ Excellent 2D image and Doppler performance
- ▶ Stress Echo
- ▶ Strain imaging
- ▶ Tissue Doppler imaging
- ▶ Pulse Wave Velocity



Ergonomic Design

This ergonomic unique human oriented design for comfort and convenience to the user

15.6-inch high resolution flat panel display



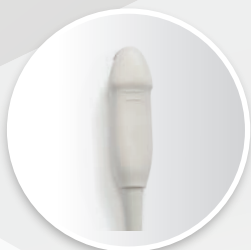
Integrated touchable alphabetic keyboard

Intuitive & capacitive touch panel for easy and simplified workflow.

Wide Range of Probes



Convex Probe
(2-6 MHz)



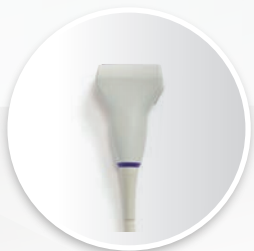
Micro-convex Probe
(5-11 MHz)



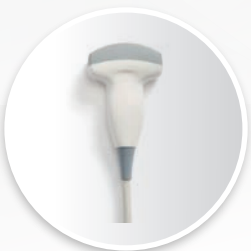
Micro-convex Probe
(5-11 MHz)



Abdominal 4D Volume Probe
(3-6 MHz)



Linear probe
(6-14 MHz)



Convex Probe
(2-6.5 MHz)



Endo-cavity Probe
(5-11 MHz, 138 Degree FOV)



Endo-cavity Probe
(5-11 MHz, 150 Degree FOV)



Linear Probe
(7-18 MHz)



Linear Probe
(6-16 MHz)



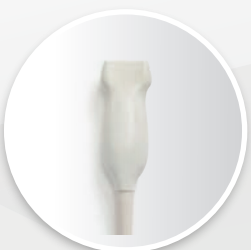
Linear Probe
(10-23 MHz)



Intraoperative Probe
(6-12 MHz)



Pediatric Cardiac Probe
(3-10 MHz)



Linear Probe
(9-22 MHz)



Hockey Stick Probe
(7-18 MHz)



Single Crystal Adult
Cardiac Probe
(2-6 MHz)



www.trivitron.com
corporate@trivitron.com | +91 98400 80008

